



\$300,000

115 Shadow Ct SW,
Huntsville, AL 35824

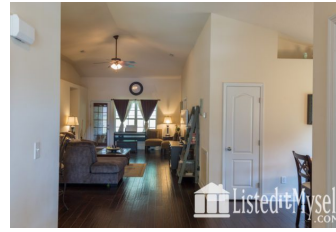
4 BR
2 BA

Contact With Seller

Susana Davenport

(256) 738-0462

susana_kastro@yahoo.com



Introduction:

A beautiful, open floor plan with fantastic location! This 4-bedroom, 2-bath home features stunning hardwood floors with ceramic kitchen tile and porcelain backsplash. Spacious windows and the open plan produce abundant natural light under a vaulted ceiling. Situated just around the corner from Redstone Arsenal's Martin Road gate, this home sits in a rapidly growing area with grocery and restaurants located at the nearest intersection. Five minutes from Town Madison, and just a few minutes to I-565 and the easy access it offers into Research Park.

Interior Features:

Hardwood floor in most of the house, backsplash in kitchen, tile in wet areas, vaulted ceiling, well-lighted open floor plan with large windows, plantation blinds in kitchen and office (front bedroom), solid French doors in the office entry

Exterior Features:

This is a brick house with covered front and back porches, two-car garage, and a privacy fence with a double gate and back gate. The house sits on a corner lot, with a rounded island out front that segments the driveway from Shadow Court's main traffic. As a corner lot, this home features a larger backyard than the typical home in this neighborhood.

Neighborhood Information:

The neighborhood is conveniently located to the Martin Road gate amid burgeoning development around the nexus of the recently widened Zierdt and Martin Roads.

School Information:

James E Williams School Grades: PK-5 Williams Middle School Grades: 6-8 Columbia High School Grades: 9-12

Finishing Touches:

waterproof padding for carpet in one of the two carpeted bedrooms



LIM#HSV2435